

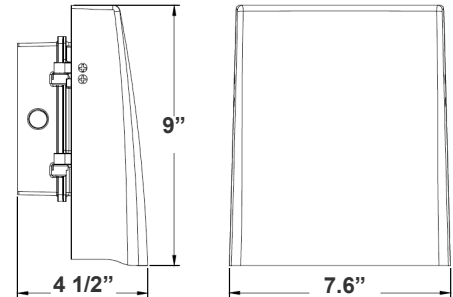
LWAX SERIES Outdoor Lighting

LWAX-MD-30W-30K-P
LWAX-MD-30W-40K-P
LWAX-MD-30W-50K-P
GEN. 2 ADJUSTABLE WALL PACK, WATTAGE & CCT SELECT. WITH PHOTOCELL

Customer Name: _____
Project Name: _____
Note: _____ | Type: _____



Ideal for general site lighting, alleys, loading docks, doorway, pathway, and parking areas. Great for use with motion sensors or another instant on/off controls.



7 3/5" (W) x 9" (H) x 4 1/2" (D)

Features

- High Light Transmittance, Anti-UV and Fire Resistant PC Lens
- Four 1/2" Knockouts: 1 Top, 1 on Each Side, 1 Back
- Die-Cast Aluminum With Powder Coat Finish (Dark Bronze)
- 7-Year Warranty

Technical Specifications

Electrical:

- Voltage: 120-277VAC 60Hz
- Wattage: 30W
- Power Factor: >0.95
- Efficacy: 130 LPW

Mechanical:

- Die-Cast Aluminum With Powder Coat Finish
- DC Button Photocell Included
- High Light Transmittance, Anti-UV and Fire Resistant Shatterproof PC Lens
- Light Head Can Be Adjusted From 0° to 90°
- Can Be Installed Facing Up (As An Uplight)
- Full Cutoff, Dark Sky Compliant
- Four 1/2" Knockouts: 1 Top, 1 on Each Side, 1 Back
- Operating Temperature: -4°F -104°F
- IP65, Suitable for Wet Location
- 7-Year Warranty

Lighting:

- Dimming: 0~10V Dimmable
- Multi CCT and Power (Switches are inside fixture)
- The Type II Distribution is Used For Wide Walkways, On Ramps and Entrance Roadways, As Well As Other Long, Narrow Lighting
- Total Lumens: 3900LM
- Color Temperatures: 3000K/4000K/5000K
- Color Rendering Index: CRI ≥ 80
- Beam angle: 80° x 100°
- Rated life: 70,000 Hrs

Applications:

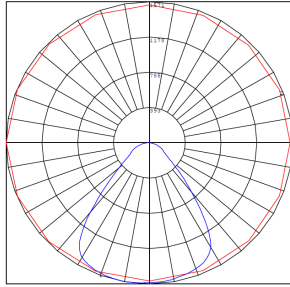
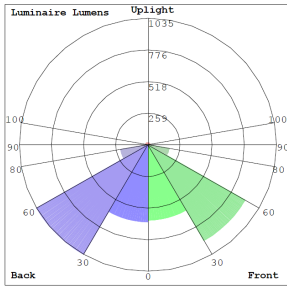
- General site Lighting
- Alleys
- Loading docks
- Doorways
- Pathways
- Parking areas

Other Models:

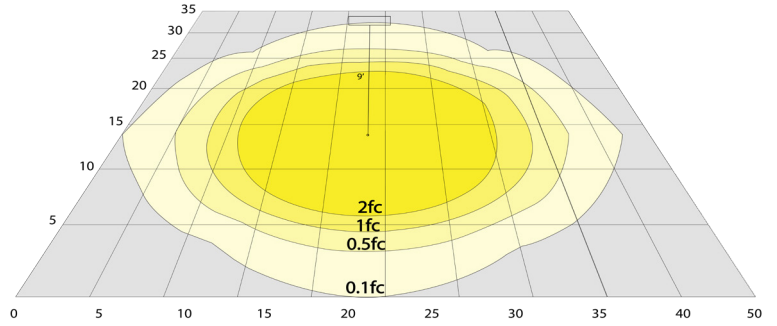
- 12W | 1500LM | LWAX-SM-12W-30K-P
- 12W | 1500LM | LWAX-SM-12W-40K-P
- 12W | 1500LM | LWAX-SM-12W-50K-P
- 12W | 1500LM | LWAX-SM-12W-30K-WH-P
- 12W | 1500LM | LWAX-SM-12W-40K-WH-P
- 12W | 1500LM | LWAX-SM-12W-50K-WH-P



Photometrics: LWAX-MD-30W-P



BUD Rating: B2-U2-G1

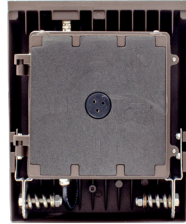


Area 35'x 50' Mounting Height: 9'

Other Views:



Side View



Front View



Back View

Performance Table: LWAX-MD-30W-P

MODEL NO.	Wattage	Voltage	Lumens	Color Temp.	BUG Rating	LPW
LWAX-MD-30W-30K-P	30W	120~277V	3900LM	3000K	B2-U2-G1	130
LWAX-MD-30W-40K-P				4000K		
LWAX-MD-30W-50K-P				5000K		

Sample Ordering

Model **Size** **Wattage** **Color Temp.** **Photocell**
 LWAX - MD - 30W - - P
 30K = 3000K
 40K = 4000K
 50K = 5000K

Accessories:

Blank = No Option For Accessories
 LWA-SH2 = SHROUD

Factory-Installed Options:

Blank = No Option For Accessories
 OPT-EM-FM1INT= INTERNAL EMERGENCY BACKUP BATTERY
 OPT-SEN-3MRLV-5 = PROGRAMMABLE MICROWAVE BI-LEVEL
 OPT-CLR-85 = COLOR PAINT
 OPT-PC-B = BUTTON
 OPT-TRS-T120 = TAMPER RESISTANT SCREW
 WEC-8RC = OPTIONAL REMOTE

ACCESSORIES:



LWA-SH2

FACTORY-INSTALLED OPTIONS:



OPT-EM-FM1INT



OPT-SEN-3MRLV-5



WEC-8RC



OPT-PC-B



COLOR CHART: * Choose from one of our Premium Colors with no set-up fee.

Gloss:



SILVER METALLIC
70 GLOSS
T357-GR105



SILVER METALLIC
30 GLOSS
T353-GR06



DARK RED 90
GLOSS
P009-RD02



INTERNATIONAL
ORANGE 90
GLOSS
T009-OG26



SAFETY ORANGE
90 GLOSS
T009-OG01



YELLOW 90
GLOSS
T009-YL14



YELLOW 90
GLOSS
T009-YL01



TRAFFIC GREEN
70 GLOSS
T007-GN16



GREEN 70 GLOSS
T007-GN13



GREEN 60 GLOSS
C006-GN03



BLUE 90 GLOSS
T009-BL01



DARK BLUE 80
GLOSS
T008-BL20



RAL 8028 TERRA
BROWN 90 GLOSS
C209-BR358

Hammer:



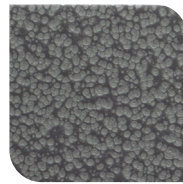
WHITE HAMMER
T013-WH09



BEIGE HAMMER
T013-BG38



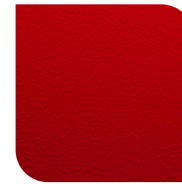
GREY HAMMER
C013-GR08



SILVER
HAMMERTONE
T064-GR05



BLACK HAMMER
T013-BK62



RED HAMMER
T013-RD15



GREEN HAMMER
T013-GN220



BLUE HAMMER
T013-BL468



BRONZE HAMMER
T012-BR161

Texture:



WHITE TEXTURE
C031-WH120



FLINT GRAY
TEXTURE
T243-GR522



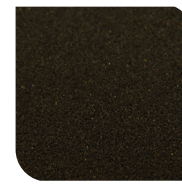
BLACK TEXTURE
C241-BK109



RED TEXTURE
T241-RD129



BLUE TEXTURE
C241-BL544



OIL RUBBED
BRONZE TEXTURE
T291-BR251

Vein:



BLACK/WHITE
VEIN
T075-WH34



SILVER VEIN
T375-BK26



COPPER VEIN
EXTERIOR
T075-BK211



GOLD VEIN
T375-BK10



COPPER VEIN
T375-BK07

